

Light efficiency:

**106 Lumen/Watt**

Light quality:

**CRI: 68.9**

Color temperature:

**5734 K**

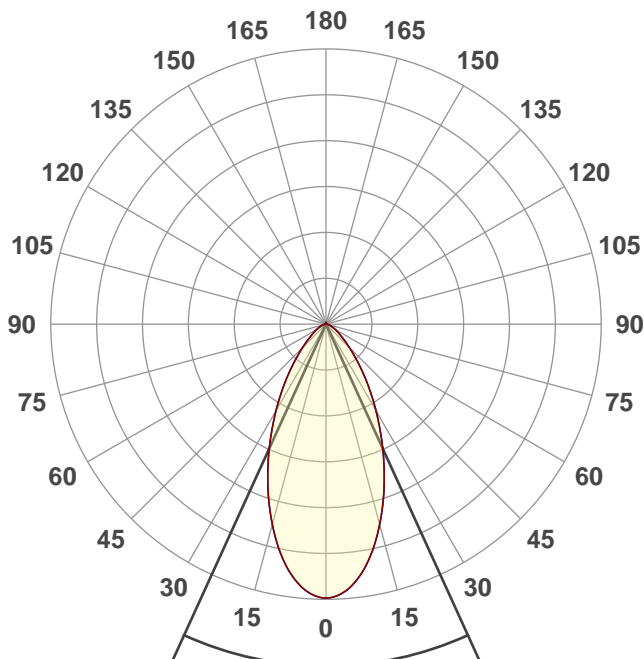
**Output: 522 lm**

**Peak: 585 cd**

**Power: 4.9 W**

**19.6V @ 0.250A**

2 PLANES



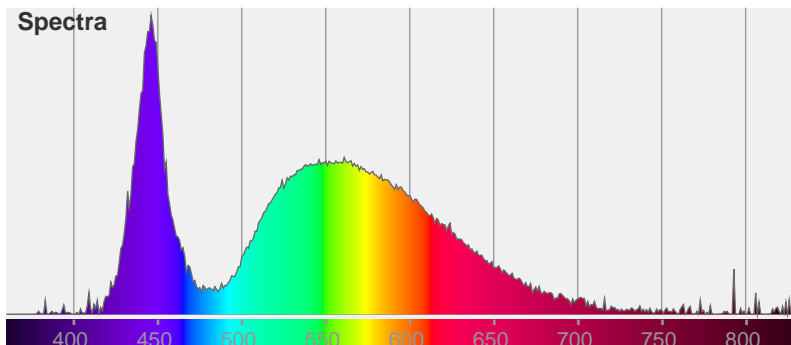
Beam angle

**49°**

Color

CIE1931  
x: 0.327  
y: 0.347

Spectra



Product name:

**CAT-HP-WHITE-40D**

Date and time:

**10/12/2020 3:27:20 PM**

Item number:

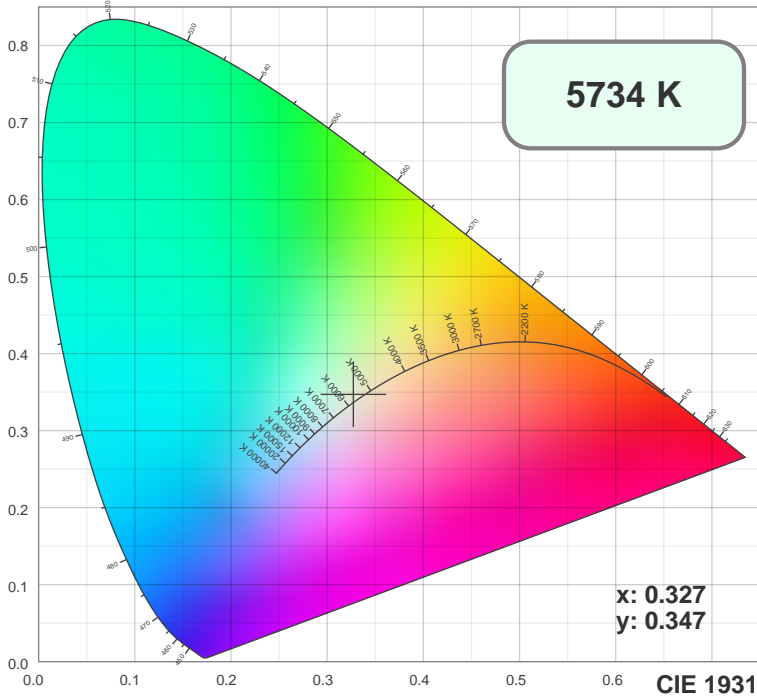
**CAT-HP-WHITE-40D**

Operator:

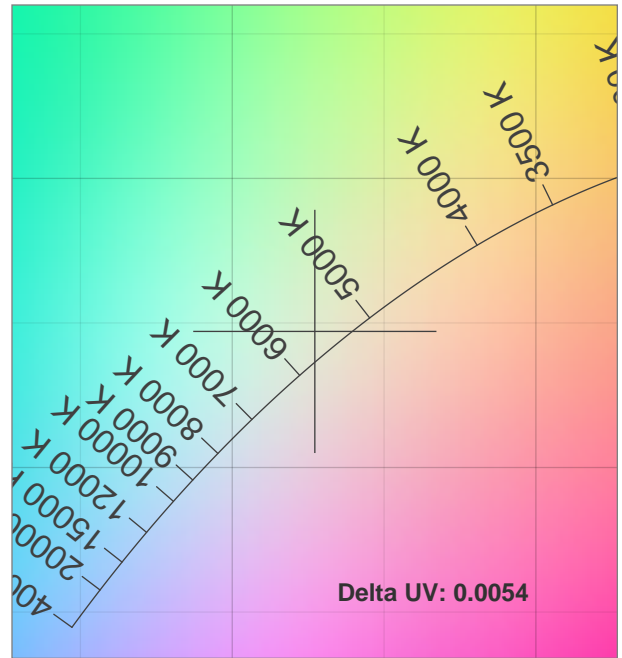
**HUNZA**

Additional information:

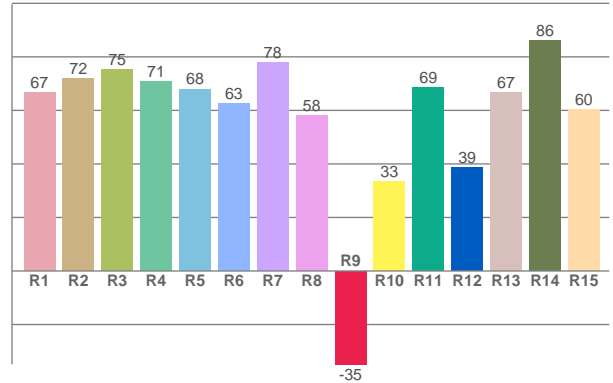
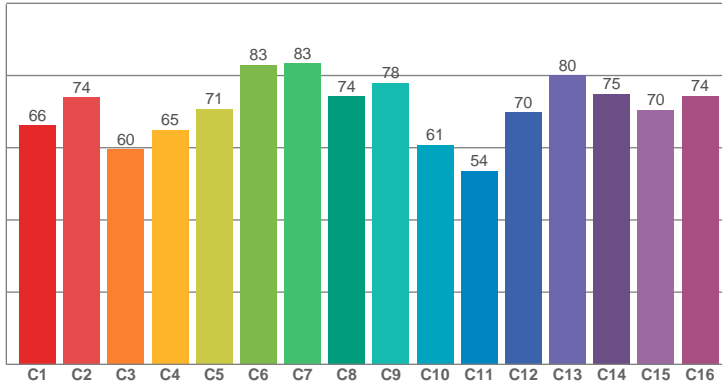
**CATENARY MOUNT HIGH  
POWER - 250MA 19.6 VOLT -  
IP66 - WHITE - 40 DEGREE -  
SOLID POWDERCOATED  
ALUMINIUM**



TM30: 70.5



CRI: 68.9 (R1-R8)



CRI R values, only R1-R8 are used to calculate final CRI value

R1	R2	R3	R4	R5	R6	R7	R8	R9	R10	R11	R12	R13	R14	R15
66.82	72.00	75.18	70.84	67.99	62.68	77.77	57.95	-34.88	33.43	68.63	38.78	66.71	85.97	60.20

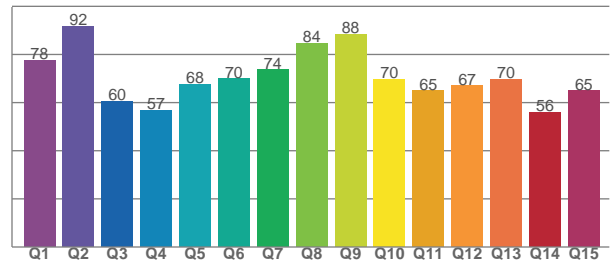
TM30 C values, 16 binned values out of total of 99 C values

C1	C2	C3	C4	C5	C6	C7	C8	C9	C10	C11	C12	C13	C14	C15	C16
66.25	73.96	59.52	64.96	70.73	82.96	83.30	74.23	77.97	60.84	53.62	69.81	80.01	74.88	70.46	74.37

CQS Q values

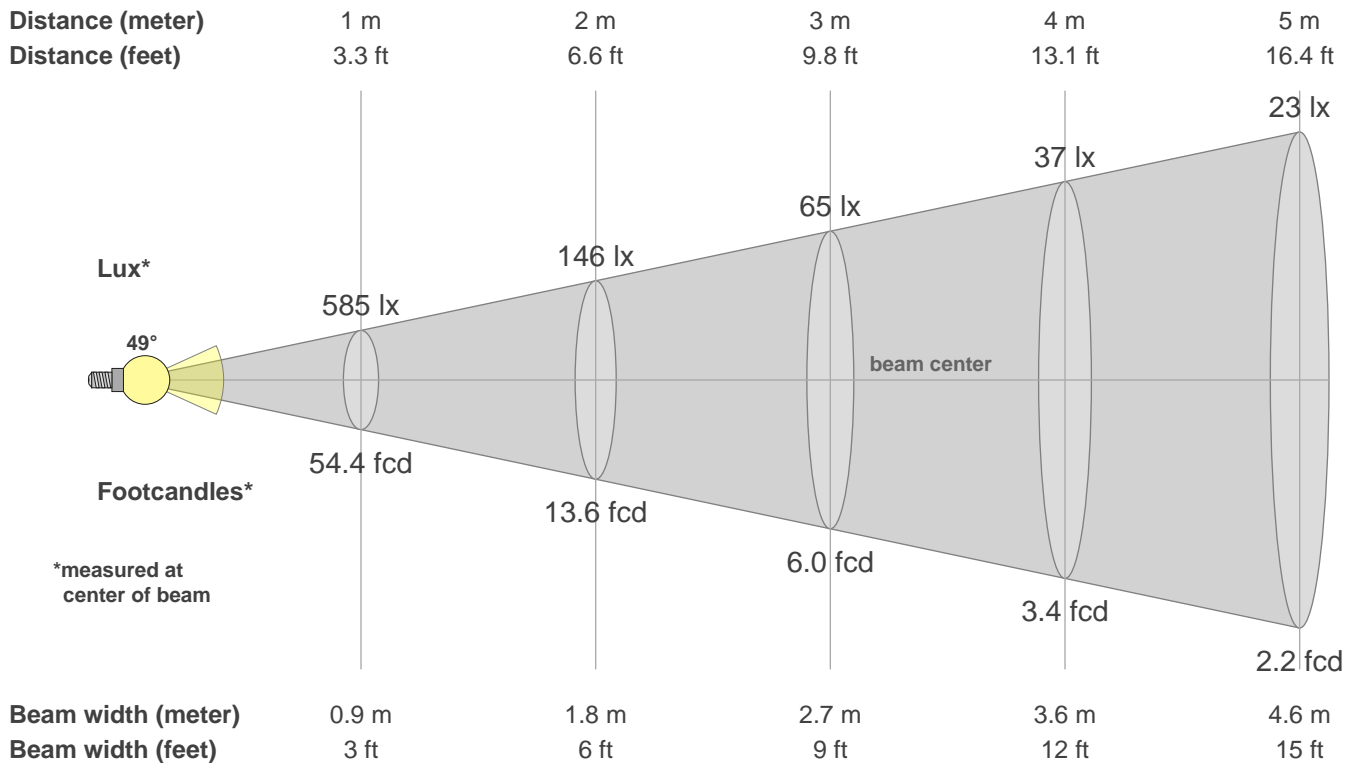
Q1	Q2	Q3	Q4	Q5	Q6	Q7	Q8	Q9	Q10	Q11	Q12	Q13	Q14	Q15
77.70	91.57	60.45	56.92	67.59	69.88	73.58	84.49	88.45	69.65	64.89	66.94	69.75	55.99	64.86

CQS: 69.1



## Color parameters

CCT	CRI	CRI R9	TM30 Rf	TM30 Rg	CQS	x	y	u	v	Duv
5734 K	68.9	-34.9	70.5	94.7	69.1	0.3	0.3	0.2	0.3	0.0021



## Intensities in 0° c-plane

0°	2°	4°	6°	8°	10°	12°	14°	16°	18°	20°	22°	24°	26°	28°	30°	32°	34°	36°	38°
585	582	573	559	539	516	489	459	428	396	364	332	301	270	241	214	188	165	143	123
100%	99%	98%	95%	92%	88%	83%	78%	73%	68%	62%	57%	51%	46%	41%	37%	32%	28%	24%	21%

## Intensities in 90° c-plane

0°	2°	4°	6°	8°	10°	12°	14°	16°	18°	20°	22°	24°	26°	28°	30°	32°	34°	36°	38°
585	582	573	559	539	516	489	459	428	396	364	332	301	270	241	214	188	165	143	123
100%	99%	98%	95%	92%	88%	83%	78%	73%	68%	62%	57%	51%	46%	41%	37%	32%	28%	24%	21%

## Intensities in 180° c-plane

0°	2°	4°	6°	8°	10°	12°	14°	16°	18°	20°	22°	24°	26°	28°	30°	32°	34°	36°	38°
585	582	573	559	539	516	489	459	428	396	364	332	301	270	241	214	188	165	143	123
100%	99%	98%	95%	92%	88%	83%	78%	73%	68%	62%	57%	51%	46%	41%	37%	32%	28%	24%	21%

## Intensities in 270° c-plane

0°	2°	4°	6°	8°	10°	12°	14°	16°	18°	20°	22°	24°	26°	28°	30°	32°	34°	36°	38°
585	582	573	559	539	516	489	459	428	396	364	332	301	270	241	214	188	165	143	123
100%	99%	98%	95%	92%	88%	83%	78%	73%	68%	62%	57%	51%	46%	41%	37%	32%	28%	24%	21%

Beam angle 50%	Field angle 10%	Cutoff angle 2.5%	Intensity ratio in 120° cone	Intensity ratio in 90° cone
49.0°	94.7°	132.3°	93.4%	83.3%